

DYNAMIC

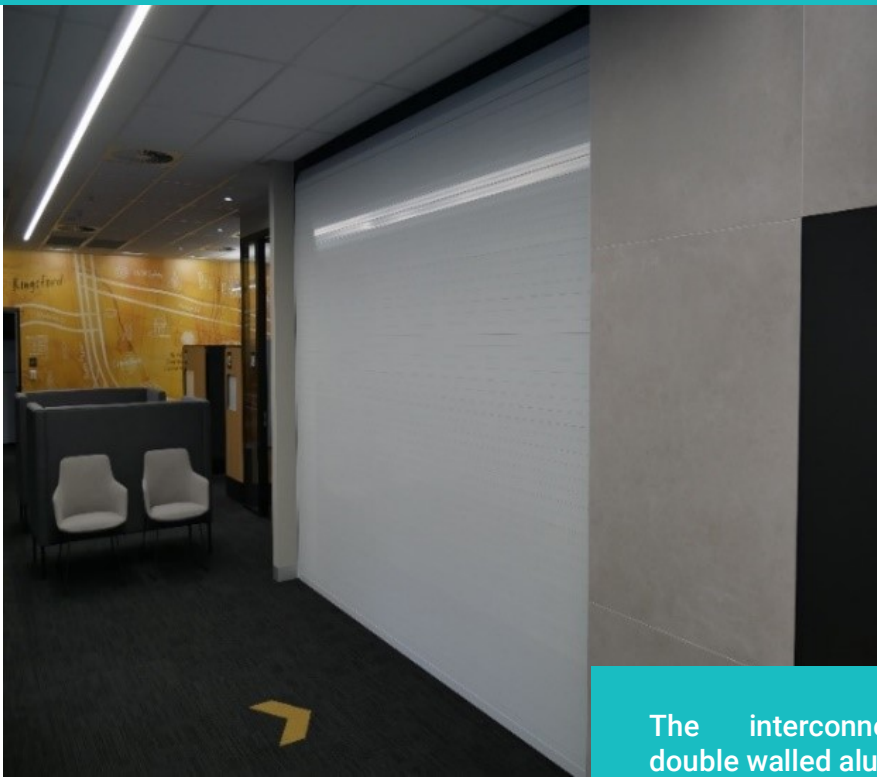
SILVER SERVICE

OPENING DOORS FOR BUSINESS

The Dynamic Silver Service team are dedicated to providing responsive, fast and effective service. Our clients depend on us to have their shop fronts and entries opening for business and closing for security.

PROSECURE® IR 50

INTRUDER RESISTANT ROLLER SHUTTER SYSTEM



The PROSecure® IR 50 Intruder Resistant Roller Shutter System is the leading solution for impact resilient applications that require impressive security and durability. Specially designed to suit commercial sites including:

- **Banks**
- **Jewellery shops**
- **Mobile kiosks**
- **Commercial shop fronts**
- **Sports centres**
- **Clubs, restaurants and cafes**
- **Shopping centre entrances**
- **High security spaces**

The interconnecting 50mm double walled aluminium security slats are supported by heavy duty extruded aluminium track guides to ensure a robust and intruder resistant roller shutter system independently tested and conforming with AS 3555. See our [Product Testing Page](#)

PROSecure IR 50 Roller Shutter System is one of the toughest and most versatile options available. This roller shutter provides the ideal solution where high security, durability and ease of operation is desired.

SPECIFICATIONS AND OPERATIONAL REQUIREMENTS

MAXIMUM OPENING DIMENSIONS

Up to 7500mm Wide X 3000mm High
Motorised with 240V Motor Drum Axle with built-in safety brake system.

COLOURS AND FINISH

Satin black or white standard or high quality powder coated colours available on request.

INSTALLATION SECURITY

Mounted on 90 X 90 X 5 (RHS)
Full Height RHS Steel Support Posts – Floor to Ceiling. Or 90/90 timber support posts by builder.

TRACK GUIDES

85mm X 28mm X 16mm heavy duty extruded aluminium.

SHUTTER SLATS

50mm double walled aluminium security slats.

OPERATION

Requires 500mm X 500mm side room in ceiling area from opening width on both sides.

Internal and external key switch operation available including emergency egress exit switch.

Crank Handle for manual override fitted directly below motor.

UPS backup available.
240V mains supply – 240V switching controller.

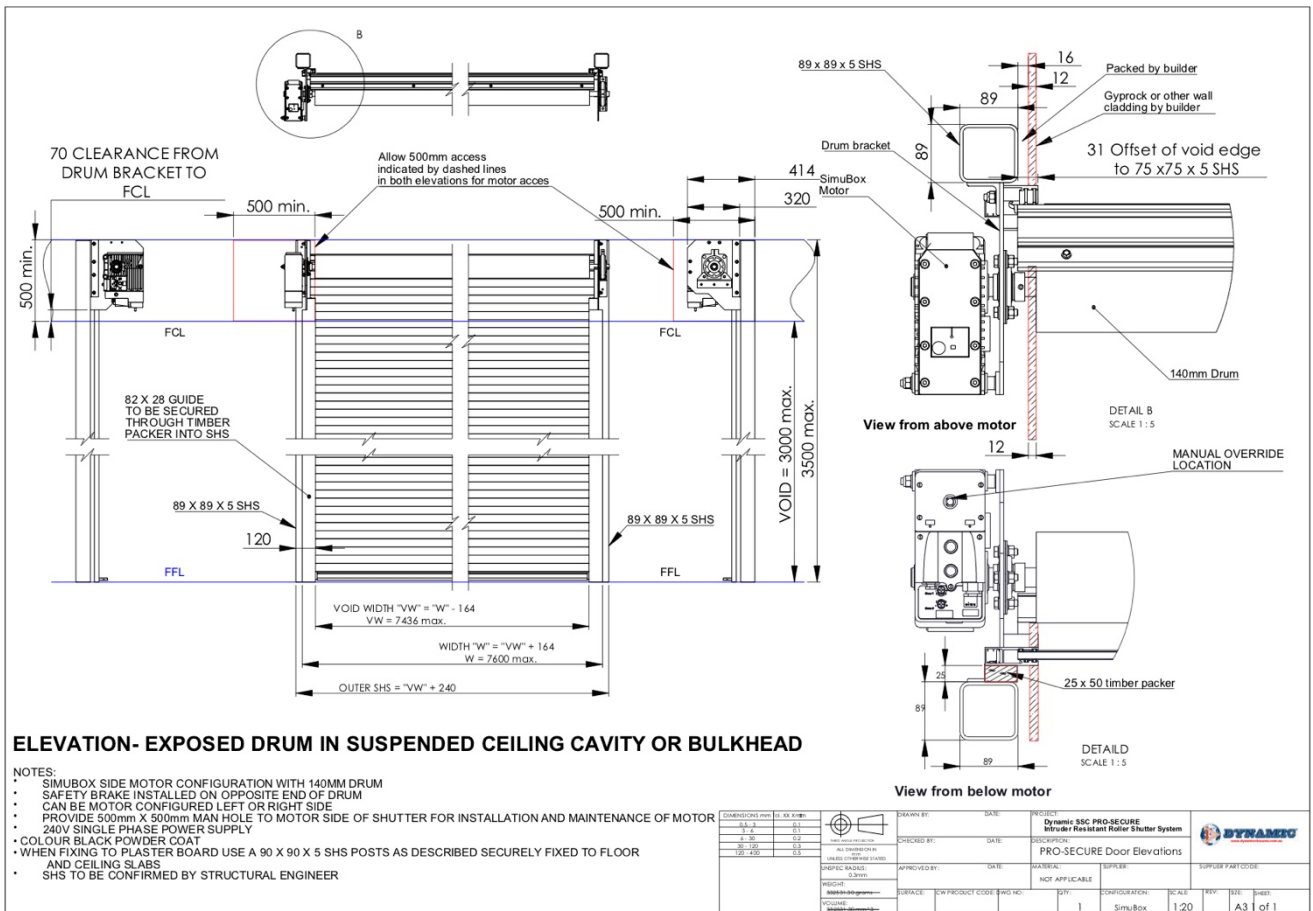


SITE WORK PREPARATIONS BY BUILDER

90 X 90 X 5 RHS or 90 X 90 timber posts by builder.

Power supply to be single phase 15amp circuit to UPS location mounting point. Provide 500 X 500 access man hole to motor side of shutter.

PROSECURE IR 50 ROLLER SHUTTER SYSTEM



Dynamic Silver Service is continually researching and developing products and reserves the right to change specifications without notice.

Contact Us

ADDRESS: 25A/1-3 ENDEAVOUR ROAD
 CARINGBAH NSW 2229
 PHONE: 02 9531 8542
 AFTER HOURS: 0401 333 776
 EMAIL: service@dynamicssilverservice.com.au